

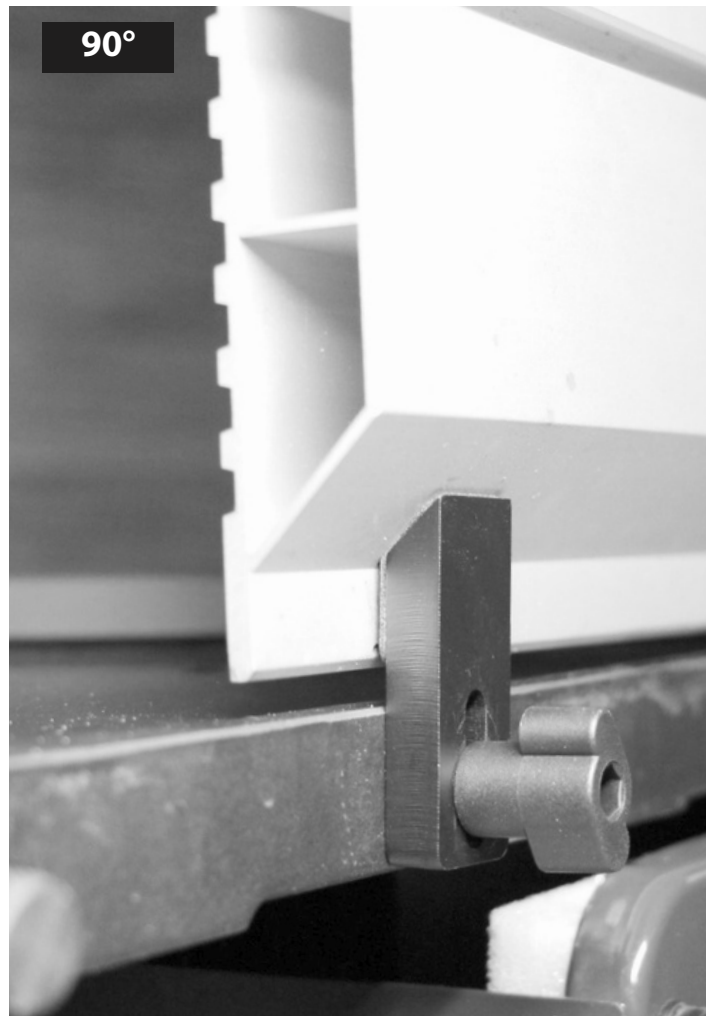
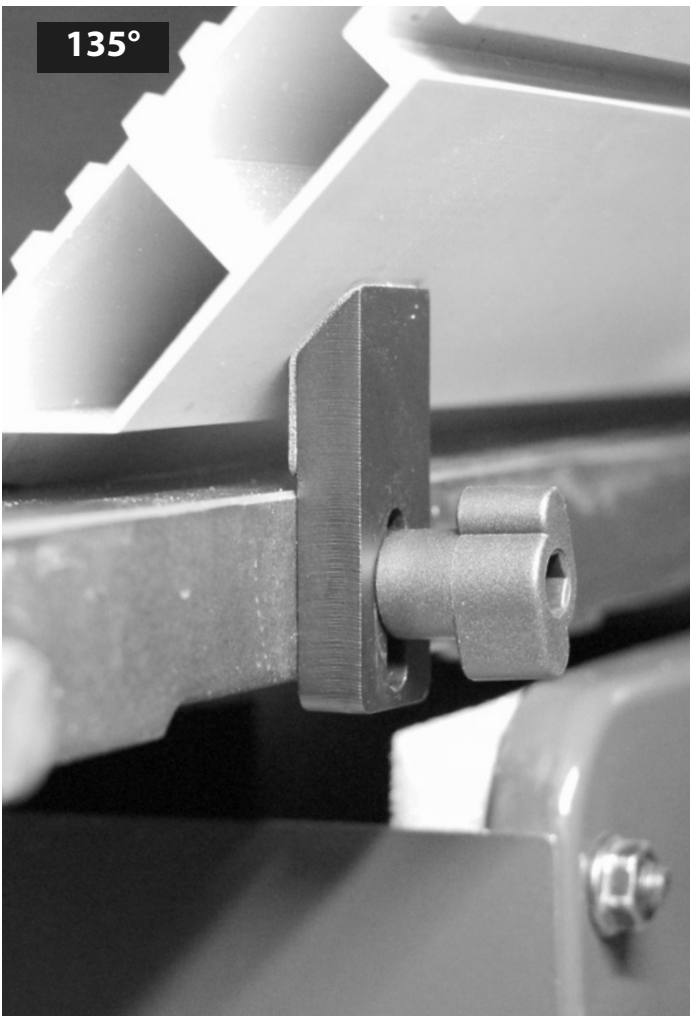


User Manual

80400FB-WHD

Fence Stabilizer System For Jointers

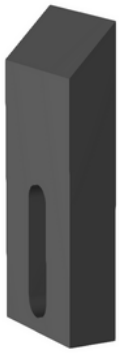
Introducing the new Wahuda Fence Stabilizing System . Help in preventing movement of the fence during operation and can be installed on Wahuda Machines and most competitive models at very affordable prices.



For technical support, email techservices@wahudatools.com or call at **877-568-8879**
VER. 08.21.23

IN THE BOX

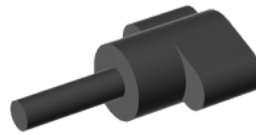
Stabilizer x 2



Cushion x 2



Locking Knob x 2



Tapping Screw M5 x 2



Nut M5 x 2



6 INCH JOINTER HOLES LOCATION DIMENSIONS

WAHUDA 50160CC-WHD 6 inch jointer (Cast iron tables) -Instruction A

WAHUDA 50160CC-WHD 6 inch jointer (Cast iron tables) -Instruction A

RIKON 20-600H 6 inch jointer(Cast Aluminum tables) – Instruction B

GRIZZLY G0946 6 inch jointer(Cast Aluminum tables) – Instruction B

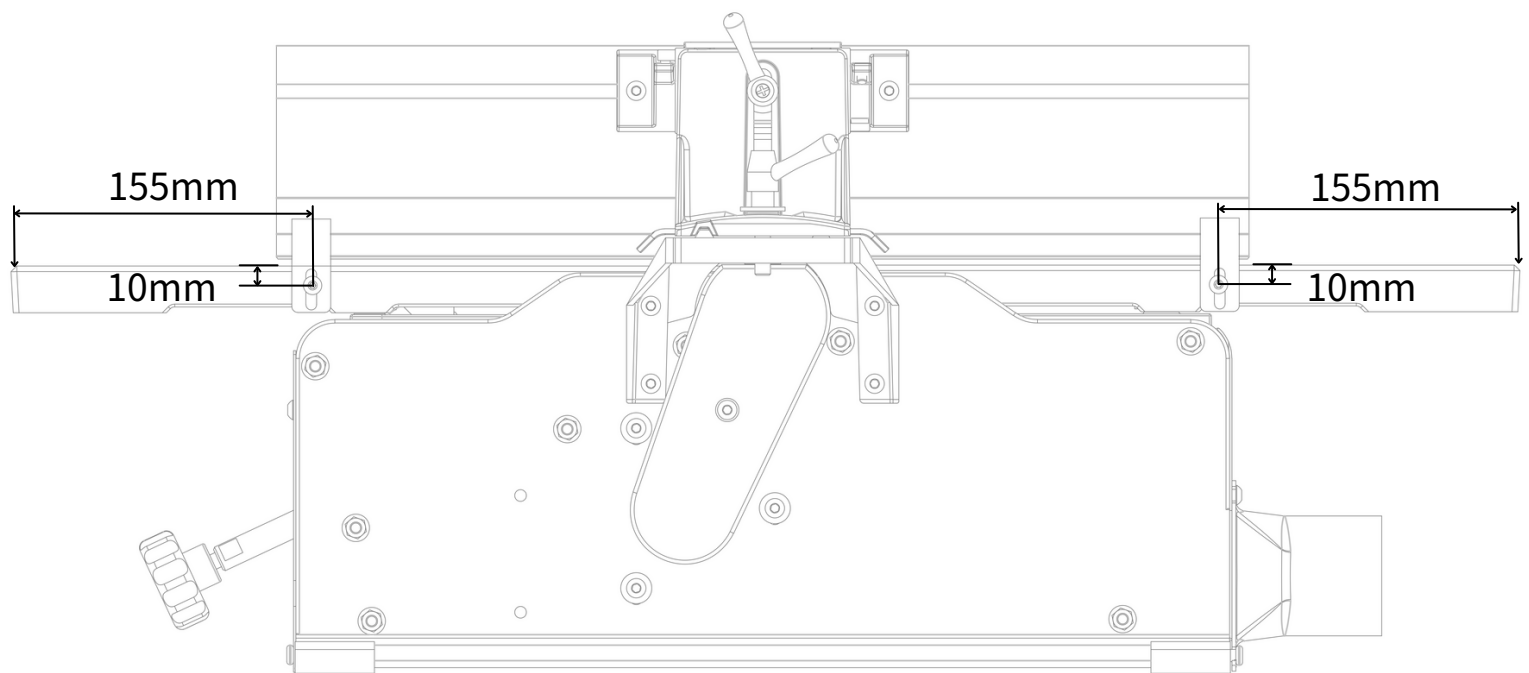
SHOPFOX W1876 6 inch jointer(Cast Aluminum tables) – Instruction B

WEN JT630H 6 inch jointer(Cast Aluminum tables) – Instruction B

CRAFTSMAN CMEW020 6 inch jointer(Cast Aluminum tables) – Instruction B

PORTER CABLE PC160JE 6 inch jointer(Cast Aluminum tables) – Instruction B

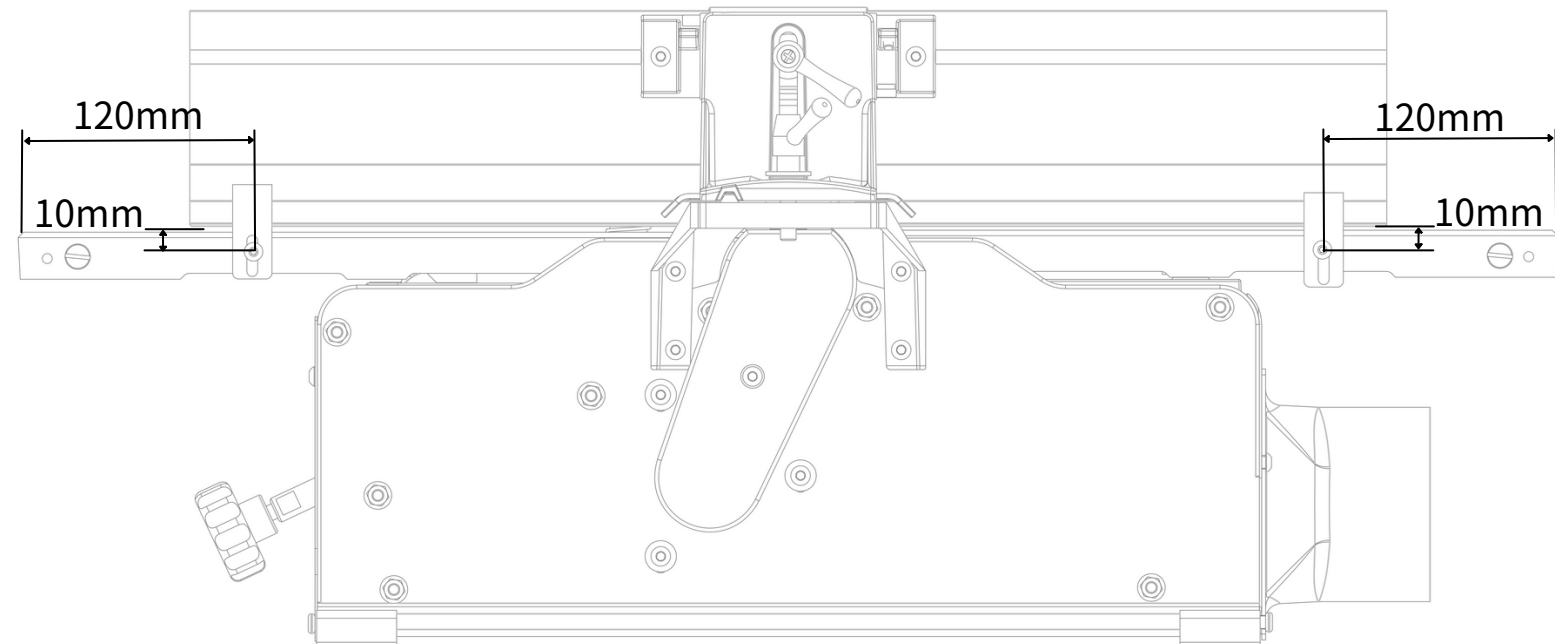
Porter CABLE JT3062 6 inch jointer(Cast Aluminum tables) – Instruction B



8 & 10 INCH JOINTER HOLES LOCATION DIMENSIONS

WAHUDA 50180CC-WHD 8 inch jointer (Cast iron tables) – Instruction A

WAHUDA 50110CC-WHD 10 inch jointer(Cast iron tables) – Instruction A



INSTRUCTION A (FOR CAST IRON TABLES)

Our Fence Stabilizer System is very easy to install on our Wahuda machines. You simply drill a 4.3mm diameter hole following the location dimensions of the sketches that match the model of machine you have in the infeed and outfeed tables, then using the provided M5 tapping screw to tap a thread in the table to attach the stabilizing bracket .

INSTRUCTION B (FOR CAST ALUMINUM TABLES)

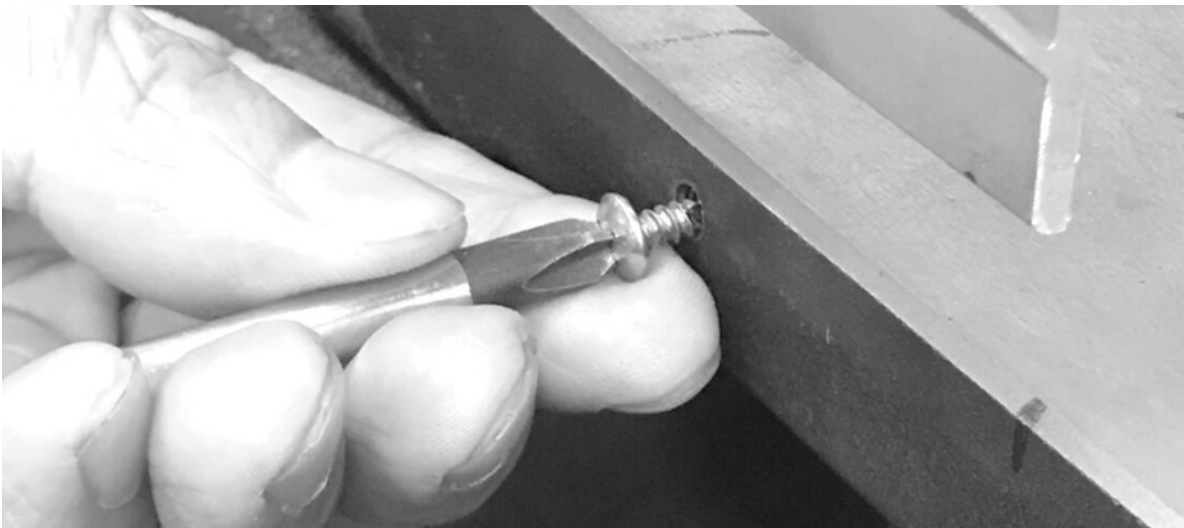
Our Fence Stabilizer System is very easy to install and can even be used to stabilize the fence on some models of our competitor's machines. You simply drill a 4.3mm diameter hole following the location dimensions of the sketches that match the model of machine you have in the infeed and outfeed tables. Then using the provided M5 tapping screw to tap a thread in the table to attach the stabilizing bracket. You may need to use the provided nut to secure the stabilizer as the wall of the table may be too thin for the threads to hold it in place.

WAHUDA FENCE STABILIZER

1. First step is to locate where to drill a 4.3mm diameter hole referring to the appropriate sketch for the size machine you have.



2. Take the included tapping screw and install it to tap the hole in the table to accept the locking knob.



3. Locate the stabilizer and attach it with locking knob and attach the cushion to complete the installation. It is adjustable to support the fence in either the 90 degree or 135 degree position.

